

---

# **Précrisa Network CHARTER OF CITIZEN PARTNERSHIP**

**November 2025**

#### EDITORIAL COMMITTEE

Audrey L'Espérance, Co-Director, Précisa Research Theme, ENAP

Clara Dallaire, Co-Director, Précisa Research Theme, Citizen Partner

Guy Poulin, Co-Director, Précisa, Citizen Partner

Micheline Najm, Executive Coordinator, Précisa

The executive committee, scientific council, and members of Précisa were consulted between June and August 2025.

We thank them for their valuable contributions, which have significantly enriched the content and have been integrated into the current version of this document.

#### How to cite this document

Health Crisis Prevention Network, Précisa (2025). Précisa Network Charter of Citizen Partnership.  
<https://doi.org/10.65130/rp2mb6v>



This document is licensed under [CC BY 4.0](https://creativecommons.org/licenses/by/4.0/).

You are free to share and adapt this document, including for commercial purposes, provided that proper credit is given in accordance with the terms of the Creative Commons Attribution 4.0 International License.

# 1. Introduction

## 1.1 CONTEXT

Précisa is a thematic research network funded by the Fonds de recherche du Québec – Santé (FRQS). It brings together individuals from diverse backgrounds and sectors to advance research that strengthens our ability to prevent, prepare for, respond to, and recover from health crises.

The Network seeks to pool resources and expertise from Quebec and beyond to pursue four strategic objectives of crisis management and the One Health approach<sup>1</sup>. These objectives are in line with the United Nations' 4C vision for crisis management, which we apply to research: Coordination, Capacity Building, Communication, and Collaboration<sup>2</sup>. Précisa adds a fifth “C” to this framework: Confidence.

All of Précisa's activities are grounded in three guiding principles, embraced by all members: sustainable health through the One Health approach, collaboration, and citizen partnership.

## 1.2 OBJECTIVES OF THE CHARTER

The Charter of Citizen Partnership is intended for all members of the Network and pursues the following objectives:

- To establish a shared vision of citizen partnership across the Network
- To guide members in systematically reflecting on and developing a citizen partnership strategy
- To ensure this strategy is coherently embedded throughout the Network's activities
- To inspire external initiatives that adopt best practices for engaging citizens and valuing their knowledge

# 2. What is citizen partnership?

Citizen partnership is, first and foremost, a mindset, a collaborative approach that brings together citizens, researchers, and decision-makers to share knowledge, skills, experiences, and resources in pursuit of common goals. It is both a relational and professional stance, grounded in mutual trust, shared responsibility, and genuine collaboration among all partners. This flexible and responsive mindset fosters inclusive spaces where every voice can contribute meaningfully. At its core, citizen partnership champions equitable collaboration, recognizing citizens as true and valued partners.

---

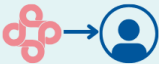
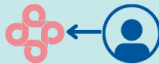
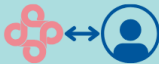
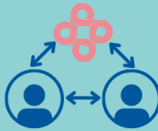

<sup>1</sup> Précisa. (2025). *Qu'est-ce que l'approche Une seule santé?* [What is the One Health approach?] <https://precisa.ca/une-seule-sante/>

<sup>2</sup> Précisa. (2024). *Charte du Réseau Précisa* [Charter of the Précisa Network].

Citizens represent a broad and diverse group, including the public, individuals directly impacted by specific issues, and users of public services, particularly within the healthcare system, regardless of their civil status. Particular attention is given to those whose voices have historically or systematically been underrepresented. Recognizing this diversity is essential, as each group contributes distinct and complementary perspectives. To ensure projects are relevant and grounded in lived realities, it is vital to engage these voices meaningfully and in ways that suit the context.

As illustrated in Figure 1, the partnership posture can take various forms<sup>3</sup>. Regardless of the format, the central objective remains co-construction between citizens, researchers, and decision-makers. This collaboration may involve jointly developing informational materials, questionnaires, interview guides, or project charters. Co-drafting an engagement mandate helps clarify expectations and fosters a shared understanding of the citizen partnership among all stakeholders (see appendix).

**Figure 1:** Forms of Engagement for Citizen Partners and Examples of Application

INFORMATION	CONSULTATION	INVOLVEMENT	COLLABORATION	EMPOWERMENT
 <p>I consult the Network's newsletter and attend a webinar to learn about ongoing projects and developments.</p> <p>I co-develop public messages in collaboration with people concerned.</p>	 <p>I share my views by responding to a survey or participating in a structured discussion session.</p> <p>I co-design a questionnaire with people concerned.</p>	 <p>I take an active part in a workshop focused on a specific issue or project phase.</p> <p>I facilitate discussion groups in collaboration with people concerned.</p>	 <p>I share responsibilities and take part in decision-making at all stages of a project, from its design to its implementation.</p>	 <p>I take the initiative to develop and lead a project, with the support and guidance of the Network.</p>

<sup>3</sup> International Association for Public Participation. (2024). *IAP2 Spectrum of Public Participation*. <https://www.iap2.org>

### 3. Précisa's commitments

The Précisa Network embraces a citizen partnership mindset that informs all aspects of its governance and activities. It actively fosters citizen engagement, valuing the lived experiences and knowledge of citizens in decision-making and project co-construction. Précisa and its members are committed to advancing research on health crises in collaboration with citizens, grounded in the principles of One Health and sustainable health. Such partnership-based research is not only more democratic—it also leads to higher-quality outcomes<sup>4</sup>.

Précisa therefore undertakes to:

- Ensure citizen partners are represented across all components of its governance structure
- Integrate citizen partners into all Network-supported projects from the earliest stages, promoting authentic co-construction
- Embed systematic reflection on partnership within all Network initiatives
- Recognize citizen partners as co-researchers when they contribute to governance and research development
- Implement effective strategies to engage citizens and welcome them as Network members
- Provide financial compensation to citizen partners for their time and contributions (see the engagement mandate appendix for details)
- Support Network members in strengthening citizen partnership practices and building capacity
- Offer resources and training to both Network members and citizen partners on citizen partnership
- Ensure adherence to the guiding principles of citizen partnership throughout all Network activities

### 4. Guiding principles

The seven guiding principles underpinning citizen partnership in all Précisa activities are drawn from the *Learning Together* Framework<sup>5</sup>. These principles were identified by a group of patient partners, researchers, and health system leaders across Canada as part of the Patient-Oriented Research Strategy<sup>6</sup>. From the earliest stages of

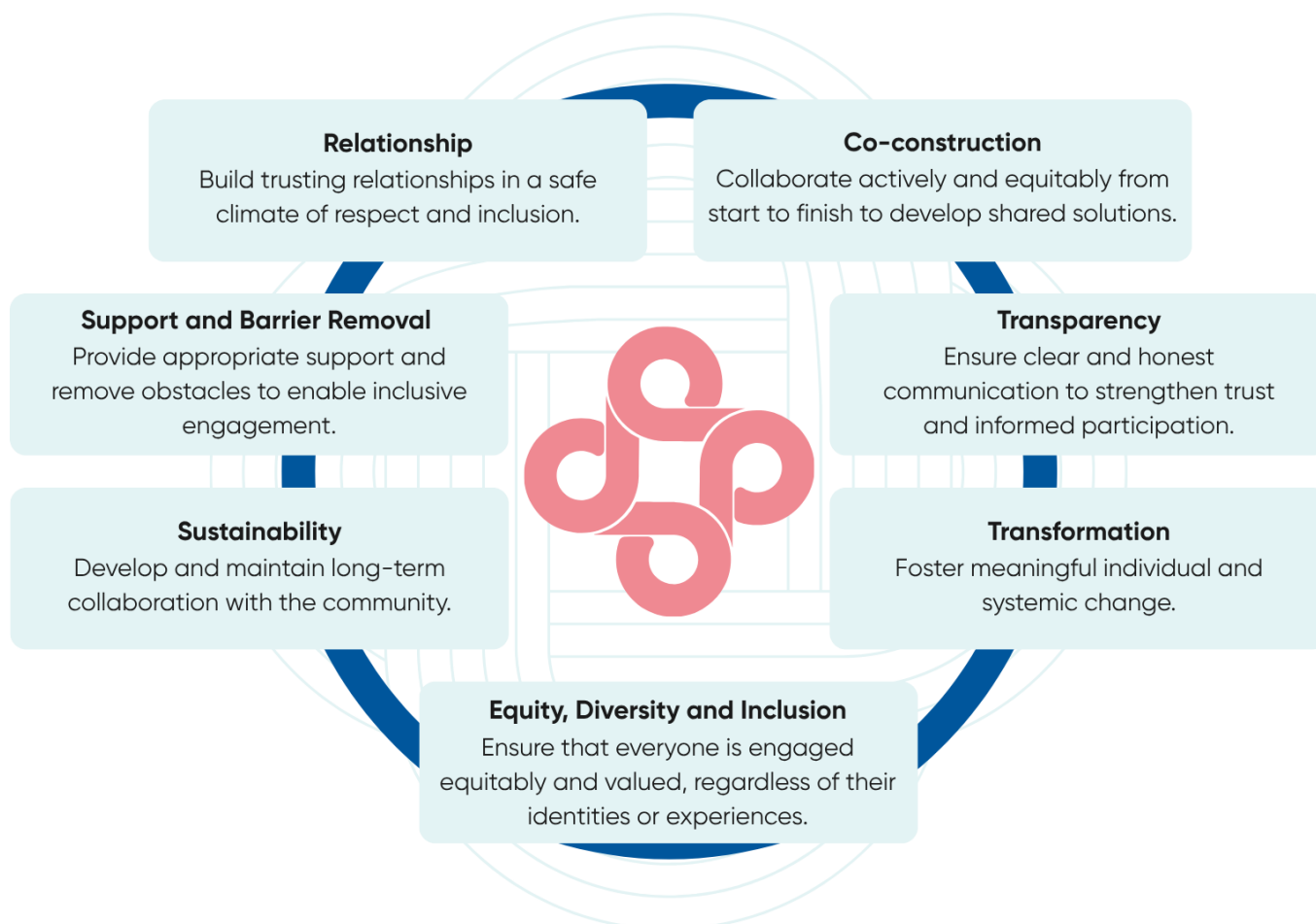
<sup>4</sup> Précisa. (2024). *Charte du Réseau Précisa* [Charter of the Précisa Network].

<sup>5</sup> L'Espérance, A., Bogdanova, E., Canfield, C., Levasseur, M. A., Del Grande, C., Abelson, J., Dogba, M. J., Fancott, C., Loignon, C., Majnemer, A., Pomey, M.-P., Rasiah, J., Salsberg, J., Santana, M., Tremblay, M.-C., Urquhart, R., & Boivin, A. (2023). *Learning together: Evaluation framework for patient and public engagement (PPE)* [Report]. Centre of Excellence on Partnership with Patients and the Public. <https://indd.adobe.com/view/8af4cb10-a621-4c0e-9ccd-21810c88ec1f>

<sup>6</sup> L'Espérance, A., Bogdanova, E., Canfield, C., Levasseur, M. A., Del Grande, C., Abelson, J., Dogba, M. J., Fancott, C., Loignon, C., Majnemer, A., Pomey, M.-P., Rasiah, J., Salsberg, J., Santana, M., Tremblay, M.-C., Urquhart, R., & Boivin, A. (2021). *Developing a Canadian evaluation framework for patient and public engagement in research: Study protocol. Research Involvement and Engagement*, 7(1), 10. <https://doi.org/10.1186/s40900-021-00255-4>

any project, members are encouraged to proactively consider how these principles can be integrated, adapted, or co-created to ensure meaningful and inclusive collaboration.

**Figure 2:** Guiding principles supporting citizen partnership<sup>7</sup>



## 5. Guidance and Resources

The Charter clearly defines the guidelines governing citizen partnership within Précisa. The Précisa Partnership platform will be dedicated to its implementation<sup>8</sup>. Designed with input from members, the platform will be tailored to their expressed needs. It may offer a range of tools, training opportunities, and personalized support to help embed citizen partnership practices into projects led by Précisa members and partners, all in alignment with the Network's strategic priorities.

<sup>7</sup> L'Espérance, A., Bogdanova, E., Canfield, C., Levasseur, M. A., Del Grande, C., Abelson, J., Dogba, M. J., Fancott, C., Loignon, C., Majnemer, A., Pomey, M.-P., Rasiyah, J., Salsberg, J., Santana, M., Tremblay, M.-C., Urquhart, R., & Boivin, A. (2023). *Learning together: Evaluation framework for patient and public engagement (PPE)* [Report]. Centre of Excellence on Partnership with Patients and the Public. <https://indd.adobe.com/view/8af4cb10-a621-4c0e-9ccd-21810c88ec1f>

<sup>8</sup> Précisa. (2025). *Plateformes, outils et services* [Platforms, tools, and services]. <https://precisa.ca/plateformes-outils-et-services/>

# Appendix

## Mandate for citizen partners of the Précisa Network

The mandate is a tool designed to clarify expectations regarding partnerships between project leaders (axes, round tables, committees, working groups, or other initiatives supported by the Précisa Network) and citizen partners.

To use it effectively, here are the recommended steps:

1. Familiarize yourself with the content of the mandate and think about the type of partnership you want and the reasons behind it.
2. Initiate an open and transparent dialogue with citizen partners using the suggested guiding questions to co-construct the partnership according to the context of the project and the needs of those involved.
3. Revise the mandate along the way, as the project evolves.
4. When relevant, attach the mandate to the application to the ethics committee and complete it with the other required documents.
5. As this mandate is specific to Précisa, please consult the institution responsible for managing project funds and applications to ensure that it complies with current guidelines and, if necessary, adapt it.

*Template to be completed according to the project.*

<p><b>Section 1: Project</b></p> <p>What is the context and what are the objectives of the project? At what stages will citizen partners be involved? What value will their contribution add?</p>
<p><b>Section 2: Citizen Perspectives</b></p> <p>What criteria will guide the selection of citizen partners? How can we ensure the inclusion of underrepresented voices and guarantee voluntary and respectful participation?</p>
<p><b>Section 3: Logistics</b></p> <p>What is the duration of the mandate? How often will meetings be held, and what will be their duration and format?</p>
<p><b>Section 4: Roles and responsibilities of project leaders</b></p> <p>What mechanisms will be used to ensure that citizen partners can express themselves with confidence? How will their contributions be taken into account and recognized? Is partnership training planned?</p>

## Section 5: Roles and responsibilities of citizen partners

What are citizen partners committed to during and between meetings? How much influence will they have in the co-construction process for decisions, directions, and deliverables? (See Figure 1)

## Section 6: Compensation

*To be completed to specify the arrangements planned for compensating the engagement:*

The (*type of partner*) will receive compensation<sup>1</sup> (\$\_\_\_/hour up to a maximum of \$280/day or, in exceptional cases, a gift card worth \$\_\_\_) for their (*attendance, preparation<sup>2</sup>, participation, and/or active participation<sup>3</sup>*) in (*activities*).

☐ Travel expenses for (*attendance, preparation, participation, and/or active participation*) in (*activities*) may be reimbursed after approval by management, in accordance with the rates in effect at (*name of the institution responsible for managing funds and requests<sup>4</sup>*).

☐ Travel expenses not applicable.

Please note that:

- Cash compensation constitutes income and is therefore taxable ([Revenu Québec](#), 2025).
- Cash compensation may affect your tax situation as well as social benefits. It is each individual's responsibility to verify the impact on their personal situation in order to make an informed decision.
- Citizen partners are free to accept or decline the proposed compensation.

### Notes:

<sup>1</sup> Compensation from the Précisa Network is \$40 per hour, up to a maximum of \$280 per day. A 2% increase in this rate is planned each year starting in 2026. Compensation in the form of an honorarium is encouraged, while the use of gift cards should remain limited. However, a gift card with a maximum value of \$60 may exceptionally be awarded to recognize a one-time contribution.

<sup>2</sup> Project managers and citizen partners are encouraged to discuss in advance the time required to prepare activities.

<sup>3</sup> Definition of active participation: "Active participation consists of being regularly and meaningfully involved in tasks, decisions, and collaboration to achieve common goals. Active participation is determined by the lead(s) of the teams or bodies involving citizen partners."

<sup>4</sup> The rates are determined according to the guidelines of the institution managing the funds, notably the Université du Québec à Rimouski (UQAR) for Précisa projects. At UQAR, travel expenses are automatically calculated in the Expense Declaration Form, in accordance with the Travel and Accommodation Directive.